

***The full customizable UPS and network management solution***

Modern UPS systems provide numerous data about their current operating status by default, but only usable if their users install unique and special tailored software. The UPSMan software is designed to decouples the constraint of this software and provides a harmonized and homogenous administration basis:

- ✓ *Flexible software interface to your UPS*  
The UPSMan software supports almost 95% of all UPS systems currently available on the market. The only requirement is an available serial interface or USB port.
- ✓ *Standardization of management and monitoring*  
Many UPS manufacturers offer their own tools and standards. With the UPSMan software, you create a uniform basis within heterogeneous network structures.
- ✓ *Intuitively meets cross-compatibility*  
Use UPSMan software in conjunction with any existing system of the CS121 and CS141 product families. The UPSMan software fits seamlessly into the canon of existing systems. Thanks to the sophisticated SNMP functions, the UPSMan software can even be used as an interface to other UPS systems with their own SNMP cards.
- ✓ *The all-in-one software solution for standalone applications*  
Get the latest status information of your UPS in real time from the network via a modern and slim web interface, automate e-mail notifications and start highly complex shutdown routines or system scripts. The UPSMan software is designed to provide all flexibility to adapt to your individual needs.
- ✓ *Powerful network management tools included*  
In conjunction with RCCMD, realize and centralize even the most demanding shutdown scenarios within heterogeneous, decentralized up to virtualized and hyper convergent network structures and trust the world's most popular shutdown solution. The UPSMan software provides all the necessary tools for professional management.



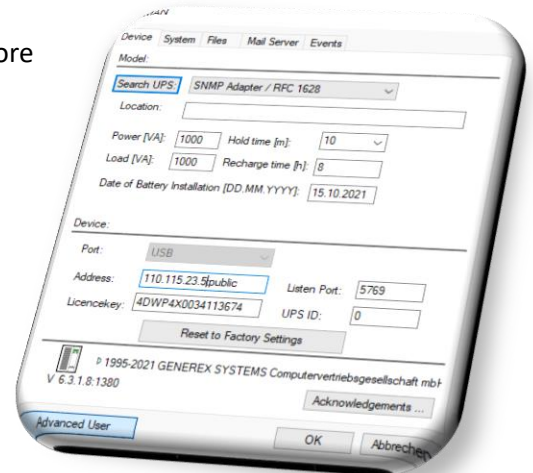
**Scope of functions**

*Core functions*

The UPSMan software is a holistic software package for communication, visualisation and emergency management. The core tasks include

- Communication
- Information
- Logging
- Management

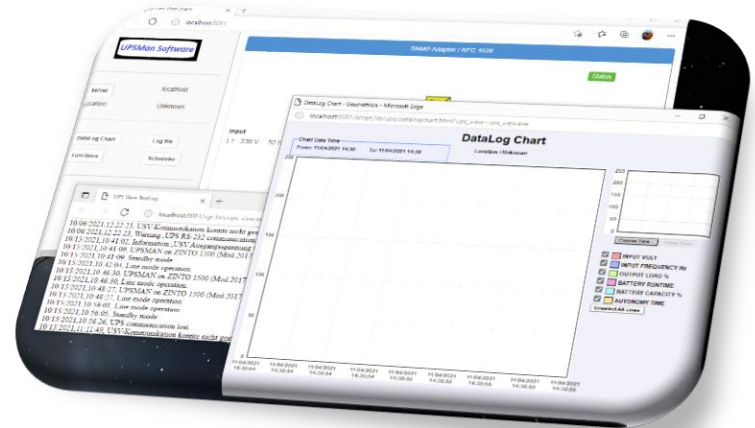
The UPSMan software is largely pre-configured to help inexperienced beginners starting, and offers experienced users' numerous functions for complex network-wide emergency management, including notification of all affected and relevant network participants via SMS, email or own script-controlled information channels.



*Uniform and convenient web interface*

The intuitive, uniform web interface provides all relevant information about the monitored UPS in real-time and offers easily accessible status information about past events, charge/discharge cycles and collected measurement data.

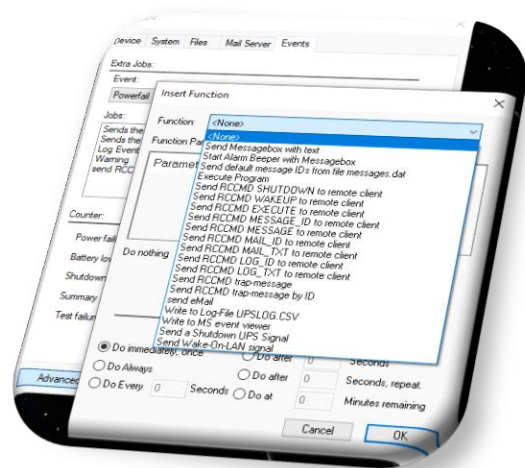
The integrated Data log Chart graphically displays all the measurement data collected and thus provides an overview of the condition of the batteries.



*Complex event control in PLC style*

For experienced users, the UPSMan software offers a well-sorted arsenal of tool to react to events and configure an appropriate response behaviour:

- Automate e-mail notifications
- Start your own scripts and batch files
- Schedule and integrate shutdown sequences
- Monitor the status of the UPS system and receive warning messages
- And do much more ...





*RCCMD included*

Each UPSMan software package is at the same time a fully-fledged RCCMD server with which you can send RCCMD control signals to any clients.

In combination with RCCMD - the world's most popular shutdown solution in the highly critical infrastructure sector - you can realize even the most complex shutdown scenarios with the UPSMan software.

- Hyper convergent server structures
- Decentralized network structures
- Heterogeneous networks
- Hyper-V
- VMware
- Nutanix
- ...



*Compatible with management systems*



***With UNMS 2, the fully-fledged network management system, unleash management at its best!***

The UPS Network Management System UNMS can actively manage monitored uninterruptible power supply systems as well as numerous system-related and non-system components and, if necessary, perform automatic actions that are reserved for specialist personnel in the case of pure monitoring.



**Technical data:**

The UPSMan software is available for the following operating systems:

UPSMAN Software for WINDOWS:

- WINDOWS 7 (Home Premium or higher) x86/x64 CPU
- WINDOWS 8.x (Pro, Enterprise) x86/x64 CPU
- WINDOWS 10.x (Pro, Enterprise) x86/x64 CPU
- WINDOWS 11 (Pro, Enterprise)
- WINDOWS Server 2008 CORE x64 CPU
- WINDOWS Server 2008 R 2 (Standard, Enterprise, Datacentre, Webserver) x64 CPU
- WINDOWS Server 2012 R2 (Standard, Datacentre) x64 CPU
- WINDOWS Server 2016 (Standard, Datacentre) x64 CPU
- WINDOWS Server 2019 (Standard, Datacentre) x64 CPU

UPSMAN Software for UNIX Solution: All kinds of LINUX flavours - all X86/x64 CPU based LINUX versions, e.g., United 1.x /SCO Linux Server 4, LINUX SUSE 7 11.x & SLES, Fedora Linux, GENTOO Linux, RedHat 7.0-9.0, RH 4, RH5.4x x32/x64, Turbo Linux 6.1-6.5, 7.x, Debian 4.x 9.x, Caldera Open Linux 2.3

**Depending on the model and expansion level, the UPSMan software supported features:**

Remote UPS monitoring	X
RCCMD – General shutdown support	X
RCCMD – Extended remote shutdown function	X
RCCMD – Group redundancy for up to 4 UPS	X
HP Open View	X
LAN support	X
Network Messaging	X
UNMS – Multi-system remote control	X
Modbus	-
Web browser management	X
Scheduler shutdown	X
History & Event log file	X
Unattended Installation / automatic install	X
Password protected remote functions	X
UPS Standard functions (battery Low, power fail, overload, UPS connection lost & restored, system shutdown, etc.)	X
UPS internal functions (Inverter overload, fuse blown, Rectifier mains fault, Inverter feeding, Battery switch open, etc.)	X
Send UPS shutdown signal	X
UPS – SNMP redundancy capability	X
Environmental monitoring	X