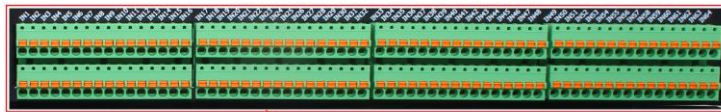




SITEMONITOR 6

Environmental Monitoring And Management

- **Standardized 19" enclosure design for standardized server cabinets**
- **Quick clamps allow easy-to-handle alarm wire installation**
- **Free definable infrastructure management**
- **A unique switching matrix to provide logical collective fault reporting with up to 64 digital inputs**
- **Intuitive user interface as well as interactive monitoring**
- **Operable under extreme conditions: Up to 70 ° C**



Scope of functions

- ➔ *Developed for standardized 19" mounting frame*

The SITEMONITOR 6 has been specially developed for professional use - the device can be used directly with any server cabinet that can hold 19" formatted devices.

- ➔ *64 digital inputs combined with a unique system matrix for maximum flexibility*

The SITEMONITOR 6 has 64 free configurable individual handled digital inputs. The integrated two-staged system matrix additionally allows to combine digital inputs. With the SITEMONITOR 6, it is possible to define any single warning or alarm states as well as escalated master alarm system states by combining different system warning and alarm states.

- ➔ *Integrated power supply for terminal devices and sensors.*

Sensors can be supplied directly via their own power source as well as via the terminal strips of the SITEMONITOR 6. Depending on the power Source of the SITEMANAGER6, provides 12 - 24 V and total output of 2 amperes.

- ➔ *Optisches LED-Feedback für schnelle Sichtkontrolle*

Jeder Alarmzustand wird zusätzlich übersichtlich auf einer LED-Leiste systematisch auf der Gerätefront angezeigt, wodurch eine schnelle Sichtkontrolle vor Ort auch ohne zusätzliche EDV ermöglicht wird.

- ➔ *Transparent network integration and single-use system - whatever is needed.*

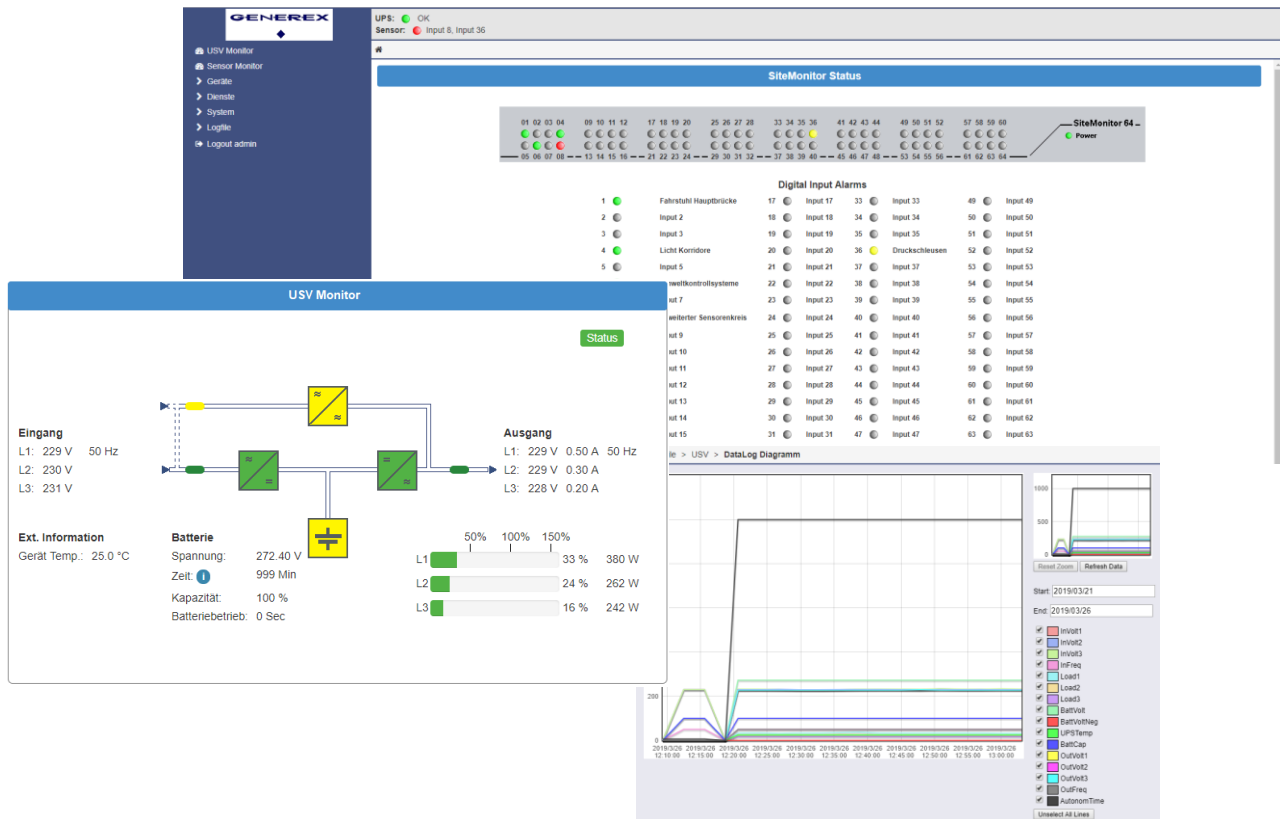
Thanks to switchable outputs, SNMP, SMTP, MODBUS over IP, RCCMD, TRAP / MAILTRAP, unleash numerous communication possibilities to any higher-level or lower-level alarm management systems. Adapt the SITEMONITOR 6 to your existing system and enhance it with new features without interfering existing installations. Simultaneously, the SITEMONITOR 6 can be used as a full-featured stand-alone management system - it is capable to monitor and manage entire segment including local EDP, switch systems and trigger and confirm timed events and event chains or inform responsible staff in case of problems.

- ➔ *Advanced UPS Monitoring included*

The SITEMONITOR 6 can be connected to a local UPS via the internal RS232 interface or you can query and virtually manage any SNMP-compatible UPS or UPS management card via the integrated RFC1628 interface module as soon as a LAN connection is possible.



Full-featured User Interface



Scope of functions: User Interface

➔ Intuitiv User interface

The intuitive and clear structured user menu has been specially designed to support fast and easy configuration work on site while providing maximum flexibility for advanced configuration work. The SITEMONITOR 6 can be adapted to any existing IT infrastructure concept.

➔ Professional management delivered by reliable data storage technologies

The SITEMONITOR 6 determines and logs every event it has been configured to. Since it is designed to provide all features of a stand-alone system, the SITEMONITOR 6 already offers a large number of log files to be evaluated on site by using build-in tools. Evaluate event chains and reconfigure the SITEMONITOR 6 in real time without further software loadout.

➔ Advanced tools for professional network structure analysis included

Built-in tracking tools collect data for a comprehensive in-depth analysis of the entire network segment.

➔ Time shifted event handling for precise and synchronized monitoring and managing.

The integrated task scheduler offers numerous possibilities to inform and even control any system in range. Start timely EDP processes, shut down computer systems in real-time or run fully automated scheduled backup scripts, reboot systems react to incidents and many more.



Features and technical data

Features

- 64 digitale Inputs (definable as normally open/ normally closed)
- 8 switchable outputs (Open Collector, 24V, 100mA)
- Timer for planned output controls, free definable start up setting for each output (on / off)
- 10/ 100Mbit / 1000Mbit LAN Port
- Supported protocols:
E-Mail, Telnet, HTTP, SNMP, SNTP, RFC868, MODBUS over IP, UPSTCP, DHCP, FTP/SFTP, RSYSLOG, BACNET
- RS-232 interface for UPS systems
- Remote control via common web browser
- Compatible to the remote control feature of the UNMS II
- LED-Alarm-Display, LED based Operating status display
- Internal battery-backed real-time clock with time service synchronization
- non-volatile memory for alarm handling
- E-Mail-Client for advanced system notification to any event
- Intelligent system matrix to provide logical input linking

Optional Parts

- UNMS II Network Management Software
- fire and smoke detector and glass breach sensors
- Shock sensors, door contacts, buzzer, etc.
- Open standard to connect any other digital Input..
- CON-IO-System cards for easy output handling

Technical data

- | | |
|-------------------------------|--------------------------------------|
| ● Voltage | 24V (min. 18V, max. 75V DC) |
| ● Max. power input | 20 watt |
| ● height (B x L x H), weight | 483 x 162 x 44mm, 2300g |
| | 19,00 x 6,38 x 1,73in, 2300g |
| ● Ethernet | 10/ 100 /1000 Mbit Base-T auto sense |
| ● RS-232 Interface | 1 Mini-Din, 9-poled, serial Adapter |
| ● digital Inputs | 64 |
| ● Dig AUX Ports | 8 |
| ● MODBUS over IP | yes |
| ● Status LED on back | normal (green), boot/error (red) |
| ● Front panel: Power (green), | 64 system state LED, red input LED's |
| ● User manual | German, English |
| ● MIB | RFC 1628 and private extensions |
| ● Operating temperature | 0 – 70 °C |
| ● Storing temperature | 0 – 70 °C |
| ● Max. recommended operation | 55 °C |
| ● Processing unit | ARM Cortex A8 800 MH |
| ● Flash Memory | 512 MB |
| ● Random Access Memory | 128 MB DDR3 RAM |
| ● Humidity | 20-95%, not condensing |
| ● Guarantee | 2 years |